



**Adelaide
High School**

Not only
for school
but for life.

Bullying prevention policy



Record History

Publish date: 12 November 2025

Version: 1.0

Responsible officer/s: Deputy Principal

Approved by: Governing Council

Approval date: 22 October 2025

Review date: Term 3 2026

Our Values

We aim to establish a community in which everybody upholds our school values of Courage, Authenticity, Excellence and Kindness; and where individual differences are appreciated, understood and accepted. Everybody has a right to enjoy their time at school.

Our Vision

*Adelaide High School is a vibrant and inclusive learning community where **every student matters and every student is supported to thrive**. We nurture all learners to be resilient, creative, and collaborative.*

We celebrate diversity, promote intercultural understanding and connect with communities locally and globally.

We are a part of tradition, and we are making history.

At Adelaide High School, we seek to foster a positive culture which does not accept or tolerate bullying in any form. We believe all members of our school community have the right to feel safe and secure in the school environment where a culture of mutual respect and understanding is embraced. Adelaide High School works with all members of our community to ensure a shared understanding of our behaviour guidelines: Safe, Responsible, Respectful and Kind is applied to create a learning community which is safe, inclusive, free from harassment, bullying, racism, discrimination, and violence.

Aims:

- To develop a shared understanding of what bullying is and reinforce it is unacceptable.
- To ensure all members of our school community are aware of and recognise the signs of bullying and harassment.
- To ensure all members of our school community are aware of their responsibility to report bullying and harassment to the appropriate authority whether they are the observer or victim.
- To develop a culture of keeping safe.
- To ensure that all reported incidents of bullying are followed up appropriately and that support is provided to all parties using a restorative approach

Our approach to bullying prevention

At Adelaide High School we will plan, implement and review our bullying prevention strategies. We will do this with our Governing Council, staff, students, families and local community.

Responding to Bullying and Harassment

All reported incidents or allegations of bullying and harassment will be documented and investigated in a timely manner.

Both the victim and bully will be offered counselling and support, and parents / caregivers will be informed.

If bullying and harassment is ongoing, despite intervention and restorative discussions, parents/caregivers will be involved, and consequences implemented in line with Adelaide High School's Behaviour Management Procedure.

Promote

We will model and promote positive behaviour.

Our actions

- Create a welcoming and inclusive school.
- Make sure staff understand their role to create a safe school.
- Set up and share school values and behaviour expectations.
- Use consistent language among staff, students, parents and carers that encourages positive behaviours and social interactions.
- Set up and display behavioural expectations in all classrooms.
- Make sure students feel safe to raise concerns and report bullying.

Teach

We will explicitly teach respectful behaviours and expectations about bullying in the classroom.

Our actions

- Build staff skills to respond appropriately to bullying.
- Teach about bullying in all year levels. Include how to prevent, identify, respond to and report bullying and cyberbullying. This will be done through the Open Parachute program and Child Protection Curriculum.
- Explicitly teach positive behaviour and social and emotional skills. Guide students to have healthy relationships, both in person and online.
- Use teachable moments when a bullying issue happens. Teach about respectful and appropriate behaviours.

Intervene

We will intervene in specific incidents of bullying or observed bullying behaviour.

Our actions

- Take bullying seriously. Respond to reports of bullying or observed bullying behaviours.
- Use fair and consistent responses to bullying or suspected bullying.
- Document all bullying incidents. All incidents of bullying and responses will be documented and stored in line with Department for Education records management procedures. A record of an incident might go in a student's file or be recorded digitally. Incidents can be recorded in our electronic databases including EMS, IRMS or Day Map.
- Check in with students while bullying incidents are being resolved. Staff will check on all students involved in a bullying incident. They will talk with students, parents and carers about the actions taken and monitor if these actions have helped address the situation.

Work with others

We will work with families, service providers and the community to address bullying.

Our actions

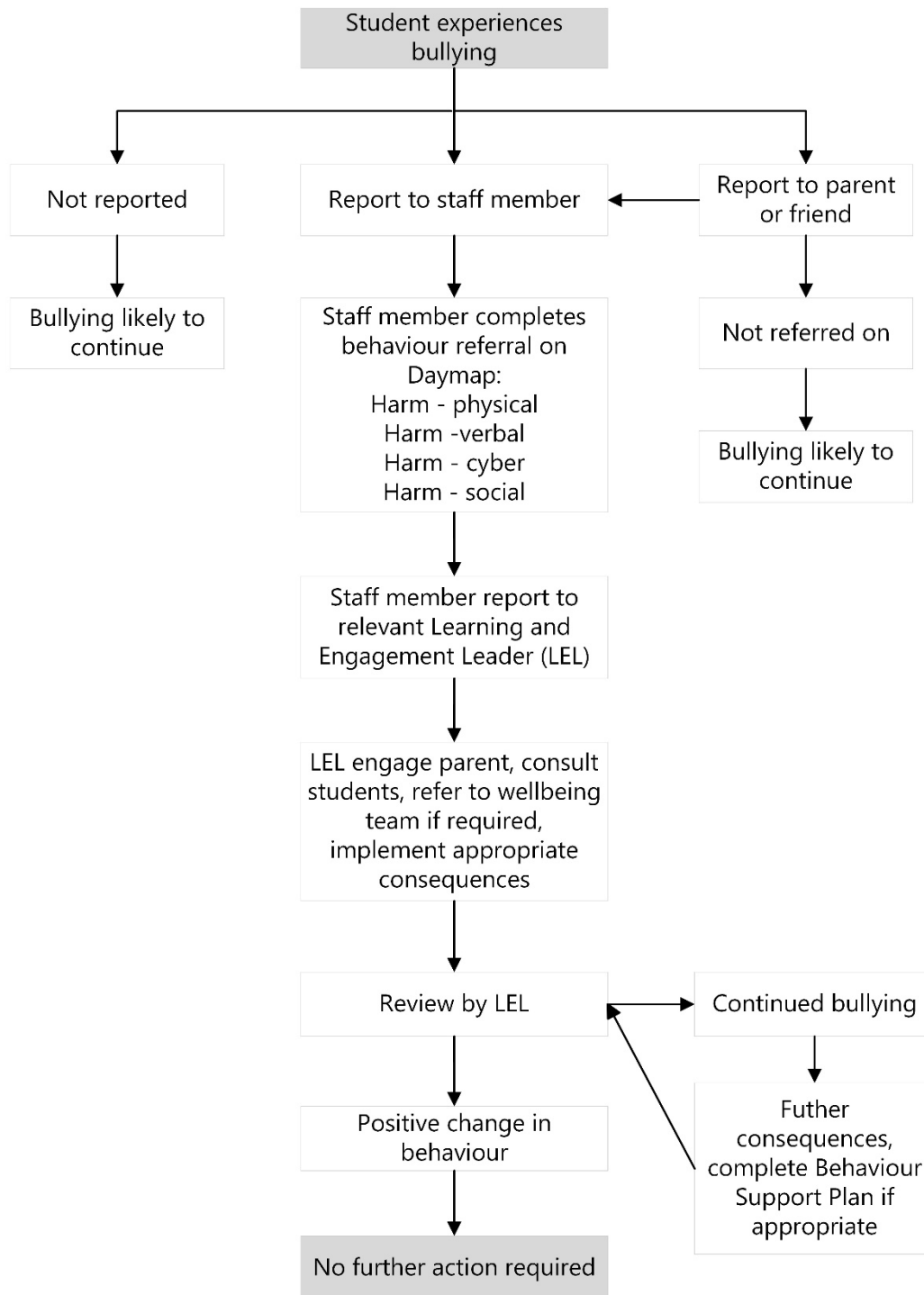
- Work with the Governing Council, site leadership, department staff and the local community to design local strategies to prevent and reduce bullying.
- Encourage parents and carers to take part in activities that promote safety and wellbeing.
- Share information with parents and carers about bullying. Include how to recognise it and what to do when their child is involved in bullying.

Respond

We will provide visible and consistent responses to bullying that foster trust and confidence in the school community.

Our actions

- Share information on how to prevent and respond to bullying and cyberbullying.
- Review our strategies and actions to prevent and respond to bullying. We will make sure that student needs are being met.
- Set up safe ways for students to report bullying and let students know how to do this.
- Make information about the complaints resolution process available.



Repair and restore relationships

We will repair and restore relationships that have been harmed by bullying.

Our actions

- Develop solutions to bullying incidents with students, staff, parents and caregivers.
- Support students who have engaged in bullying behaviours. Help them to think about the result of the behaviour. Help them to learn positive behaviours.
- Support all students who experience bullying, engage in bullying behaviour, or witness bullying.

Create safety and wellbeing

We will establish safety and wellbeing.

Our actions

- Take action against discrimination, harassment and violence. Report criminal actions to South Australia Police.
- Provide targeted social and emotional support for students who need more help after bullying incidents.
- Set up inclusive practices so students who might feel excluded are safe and supported.

How bullying is reported and resolved

We will work with students, parents and caregivers to resolve bullying issues. If needed, we will get advice, counselling and support from internal and external services.

All reports of bullying will be taken seriously. Responses will be planned and quick. The principal or leadership team will immediately respond to life threatening, significant harm or criminal behaviour issues. We will refer criminal actions to South Australia Police.

Our responses will restore the safe and positive learning environment.

Report bullying

You can report bullying to any member of staff. Please refer to flow chart.

Give us as much information as possible. This might include:

- who was involved, including who engaged in the bullying behaviour, who the behaviour was directed at and witnesses
- when the incident happened
- where the incident took place, for example social media
- the behaviour
- if anyone stopped or tried to stop the behaviour
- what led up to the incident
- what happened after the incident.

Gather and document information

Staff might speak about the incident with:

- students
- parents or carers
- other staff
- any other witness or person involved.

Intervention and support

Staff will see if the incident:

- meets the definition of bullying
- pose an immediate risk to student or staff safety.

If there is no immediate risk, staff might use the following strategies with students directly involved:

- restorative practices, including an apology
- Method of Shared Concern or Support Group Method of intervention
- parent or carer meeting
- school-based consequences

For example:

- loss of privileges
- given a learning task
- use of reflection space or class
- limited areas for play or activities or extra yard supervision
- suspension and exclusion.

Refer to services

Refer students to specialist support, if needed. This might be from the Department for Education or external services. Options will be discussed with students and their families.

Document and record

All incidents of bullying and responses will be documented and stored in line with Department for Education records management procedures. A record of an incident might go in a student's file. Incidents can be recorded in our electronic databases. For example, EMS, Day Map or the department's incident management system.

Monitor and follow up

Staff will check on all students involved in a bullying incident. They will make sure all students are safe and relationships are repaired. They will talk with students, parents and carers about the actions taken. They will check if these actions have helped.

If a student, parent or carer are not happy with the steps taken by the school, they can call the department's complaints management line on 1800 677 435.

Definitions

Bullying

A national definition of bullying has been endorsed by the Education Council.

Bullying is an ongoing and deliberate misuse of power in relationships through repeated verbal, physical and/or social behaviour that intends to cause physical, social and/or psychological harm. It can involve an individual or a group misusing their power, or perceived power, over one or more persons who feel unable to stop it from happening.

Bullying can happen in person or online, via various digital platforms and devices and it can be obvious (overt) or hidden (covert). Bullying behaviour is repeated, or has the potential to be repeated, over time (for example, through sharing of digital records).

Bullying of any form or for any reason can have immediate, medium and long-term effects on those involved, including bystanders.

Single incidents and conflict or fights between equals, whether in person or online, are not defined as bullying.

Bullying has three main features

It involves a misuse of power in a relationship

Conflict or fights between equals are not defined as bullying. Bullying occurs where there is a power imbalance. This might come from:

- the context. For example, a number of children acting against one child
- personal characteristics. For example, different physical, emotional or social development.

It is ongoing and repeated

One incident of misbehavior is generally not defined as bullying. Schools will still respond to all incidents of misbehavior.

One act by one person might be bullying if:

- the behaviour adds to a series of other people's behaviours that misuse power and result in harm
- it can be shared online or with technology to a wide audience or repeated with multiple views.

It involves behaviours that can cause harm

Bullying can cause physical and psychological harm.

Physical harm can include injury. It can also include theft or damage to belongings.

Psychological harm can include:

- anxiety
- not wanting to go to school
- lack of interest in school
- isolation and depression.

Psychological harm can last some time. It will depend on a student's situation and the support available to them. Support might come from family, school and friends.

A fear of being bullied can create psychological harm.

Examples of types of bullying:

Physical: hitting, kicking, tripping, pinching, pushing or damaging or stealing belongings.

Verbal: verbal abuse, name calling, insults, taunting, intimidation, threats.

Social: social exclusion, lying, spreading rumours, unkind facial expressions or body language, mean and condescending looks, playing jokes to embarrass and humiliate, mimicking and damaging someone's reputation or social relationships.

Cyber: Cyberbullying is online bullying. It uses technology, including social media platforms. Verbal and social bullying can be cyberbullying when they occur online.

Cyberbullying includes:

- abusive texts and emails
- hurtful messages, videos and images, including images that have been changed
- sharing personal images and videos without consent
- pretending to be someone else online to be hurtful.

Harassment, discrimination and violence

Bullying, harassment, discrimination and violence all create or add to a negative environment. This can make students feel unsafe and unable to reach their full potential.

Harassment

Harassment is a behaviour that targets an individual or group. This can be due to their: identity, race, culture or ethnic origin; religion; physical characteristics; gender; sexual orientation; age; or ability.

It offends, humiliates, intimidates or creates an unsafe environment. It might be a pattern of behaviour or a single act. It might be directed randomly or at the same person. It might be on purpose or unintended.

Discrimination

Discrimination happens when people are treated differently to others. This can be because of their: identity, race, culture or ethnic origin; religion; physical characteristics; gender; sexual orientation; age; or ability. Discrimination interferes with people's right to fair treatment and equal opportunities.

Violence

Violence is the intentional use of physical force or power. It can be threatened or actual, against another person. It might result in psychological harm, injury or in some cases death. It might involve provoked or unprovoked acts. It can be one incident, a random act or can happen over time.

Bullying, harassment, discrimination and violence may be based on gender, race, sexuality, culture, religion, disability and care status. Bullying, harassment, discrimination and violence for any reason is not acceptable in South Australian public schools. It will be responded to.

Responses will depend on the:

- behaviours
- needs of the students
- rights of all students to be safely included in learning.

Roles and Responsibilities

We each have a role to play to:

- prevent bullying and harassment
- respond when it happens
- support those involved and affected by bullying.

The Australian Student Wellbeing Framework elements are leadership, inclusion, student voice, partnerships and support. They guide our practices and responses to prevent and reduce bullying in our school community.

School leaders and staff

- Model and promote positive behaviour. Value diversity, demonstrate respect, and include all students and their families.
- Provide and take part in professional development to build skills, knowledge and confidence about preventing bullying. Including how to recognise, respond and manage it.
- Assess bullying data and trends to develop prevention strategies. Do this with the Governing Council and school community.
- Collect data on bullying regularly. Use the data to plan how you will prevent and respond to bullying.
- Explicitly teach students about respectful relationships, bullying and cyberbullying. Teach them how to recognise bullying, what to do and how to get help.
- Work with students to come up with solutions to bullying. Include them in decisions that affect their safety and wellbeing.
- Support all students to be included, in particular students at higher risk of being bullied.
- Take action when bullying and cyberbullying has been reported. This includes incidents that happen out of school hours or off school grounds when it relates to school relationships.
- Report criminal matters to the South Australian Police.
- Help parents and carers to recognise bullying. Include information about what to do when their child is engaging in or affected by bullying.
- Work with families, service providers and the community to support students affected by bullying.
- Support students to repair and restore relationships that have been harmed by bullying.
- Have planned responses to bullying. Make them visible and consistent. Responses should foster trust and confidence.
- Help students to be physically and psychologically safe from bullying.

Parents, carers and families

- Model and promote safe, respectful and inclusive behaviours.
- Help their children to be safe online at home. This includes checking their children's use of technology and social media.
- Make sure their children know how to identify and report bullying. Work with the school to help their children be safe from bullying.
- Talk to their children about safety issues. This includes bullying and cyberbullying. Help them understand what it is, why it is harmful and how to respond. Use the same messages the school uses.
- Report concerns about bullying to school staff.
- If a bullying incident happens, work with the school.
- Support their children to go to school while a bullying issue is being worked on.
- Get external professional support for their child, if needed.

Students

- Model behaviours that are safe, respectful and inclusive, both face-to-face and online.
- Build skills, knowledge and confidence to recognise, respond to and manage bullying.
- Be a part of decision making to improve student safety and wellbeing.
- Take a stand when bullying is observed. Step in, if it's safe. Seek help from adults.
- Support friends and peers get help from trusted adults if they experience bullying.
- Support friends to behave in safe, respectful and inclusive ways if their friends engage in bullying.

Department of Education

- Provide support and advice to principals to equip them to manage and respond to challenging behaviour of students, parents and staff.
- Provide practical guidance and resources to support schools to manage and respond to challenging behaviour of students, parents and staff.
- Provide practical guidance and resources to support schools respond to and prevent bullying and promote cyber-safety and wellbeing.
- Provide access to evidence based resources and strategies to increase student safety, wellbeing and engagement.
- Provide schools with practical and legal support as required.
- Provide parents with practical guidance and resources to resolve conflicts with the school.